

FOLDER-GLUERS

# MEGAFOLD

1450 / 1650 / 1850 / 2000 / 2400 / 2800 / 3200



HIGH RESPONSIVE  
CARTON CONVERTING  
MACHINERY

**ADGM**

# MEGAFOLD

1450 / 1650 / 1850 / 2000 / 2400 / 2800 / 3200



## A high capacity production solution

### HIGH SPEED AUTOMATIC FOLDER GLUER

MEGAFOLD is a perfect solution to work with medium and large sized boxes in the heavy packaging industry. With high productivity, it offers the flexibility to run thin solid board to thick corrugated carton.

- Modular design allows different configurations, to meet customer's needs.
- Wide range of accessories that allows to run thousands of designs.
- Fast, steady and precise machine, easy to set up and operate.
- All sections with independent servo-motor driving system.
- Motorized carrier movement with high precision linear guides.
- Memory function to save repetitive jobs.

### MODELS

#### MEGAFOLD C

Without pre-folding section, suitable for straight-line boxes.

#### MEGAFOLD AC

Without pre-folding section, suitable for straight-line, crash-lock bottom & double wall boxes.

#### MEGAFOLD PC

Including pre-folding section, suitable for straight-line, crash-lock bottom & double wall boxes.

#### MEGAFOLD SL

Including pre-folding section, suitable for straight-line, crash-lock bottom, double wall, 4 & 6-corner boxes.



#### FAST PROCESSING

300m / min



#### WIDE RANGE

1450 mm to  
3200 mm



#### MATERIALS

Cardboard  
Corrugated

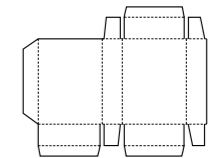


#### FLEXIBLE & EASY TO OPERATE

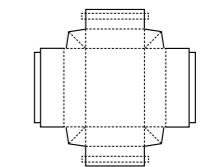


CERTIFICATED

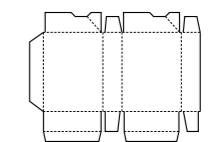
### BOXES



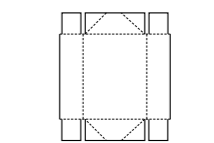
Straight line



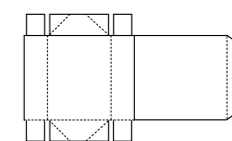
Double - wall



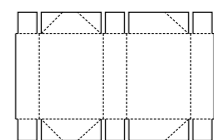
Lock - bottom



4 - corner



4 - corner  
with Lid



6 - corner

# MEGAFOLD

1450 / 1650 / 1850 / 2000 / 2400 / 2800 / 3200



1 Deliver solution and productivity

Upper and lower drive mechanism for length adjustment.



2 Infinitely close to perfection

Squaring device for crash-lock bottom boxes, it reduces fish-tail.



3 Operator friendly

Upper carriers with pneumatic auto-lifting system. Facilitates box clearance if jam occurs.



4 Versatility and modular design

Pneumatic lifting front hook for big crash-lock bottom boxes.

# MEGAFOLD

1450 / 1650 / 1850 / 2000  
2400 / 2800 / 3200

SPECIFICATIONS	1450												1650				1850				2000				2400				2800				3200															
<b>Processed materials</b>																																																
Carton board max.	1200 g/m <sup>2</sup>																																															
Corrugated flute type	N, E, F, C, B, AB, 3 & 5 layers																																															
<b>Capability</b>																																																
Speed max.	300 m/min																																															
Inching speed	20 m/min																																															
Thickness of folded box max.	20 mm																																															
Blank width	290 - 1450 mm				290 - 1650 mm				290 - 1850 mm				290 - 2000 mm				290 - 2400 mm				290 - 2800 mm				290 - 3200 mm																							
<b>Dimensions &amp; weight</b>	<b>C</b>	<b>AC</b>	<b>PC</b>	<b>SL</b>	<b>C</b>	<b>AC</b>	<b>PC</b>	<b>SL</b>	<b>C</b>	<b>AC</b>	<b>PC</b>	<b>SL</b>	<b>C</b>	<b>AC</b>	<b>PC</b>	<b>SL</b>	<b>C</b>	<b>AC</b>	<b>PC</b>	<b>SL</b>	<b>C</b>	<b>AC</b>	<b>PC</b>	<b>SL</b>	<b>C</b>	<b>AC</b>	<b>PC</b>	<b>SL</b>	<b>C</b>	<b>AC</b>	<b>PC</b>	<b>SL</b>	<b>C</b>	<b>AC</b>	<b>PC</b>	<b>SL</b>	<b>C</b>	<b>AC</b>	<b>PC</b>	<b>SL</b>								
Length (meters)	18.8	20.8	23.8	23.8	18.8	20.8	23.8	23.8	18.8	20.8	23.8	23.8	18.8	20.8	23.8	23.8	18.8	20.8	23.8	23.8	18.8	20.8	23.8	23.8	18.8	20.8	23.8	23.8	18.8	20.8	23.8	23.8	18.8	20.8	23.8	23.8	18.8	20.8	23.8	23.8								
Width (meters)	2.2	2.2	2.2	2.2	2.4	2.4	2.4	2.4	2.6	2.6	2.6	2.6	2.6	2.6	2.6	2.6	2.6	2.6	2.6	2.6	2.6	2.6	2.6	2.6	2.6	2.6	2.6	2.6	2.6	2.6	2.6	2.6	2.6	2.6	2.6	2.6	2.6	2.6	2.6	2.6								
Height (meters)	1.7	1.7	1.7	1.7	2.0	2.0	2.0	2.0	2.0	2.0	2.0	2.0	2.0	2.0	2.0	2.0	2.0	2.0	2.0	2.0	2.0	2.0	2.0	2.0	2.0	2.0	2.0	2.0	2.0	2.0	2.0	2.0	2.0	2.0	2.0	2.0	2.0	2.0	2.0	2.0								
Net Weight (Tons)	12	13.5	14.5	14.8	13	14.5	15.5	15.8	15	17	18	18.2	17	19	20	20.3	19	21	22	22.3	21	23	24	24.5	23	25	26	26.5	23	25	26	26.5	23	25	26	26.5	23	25	26	26.5								
<b>Installation</b>																																																
Electrical connected load (kW)	40				45				50				56				40				45				50				56				40				45				50				58			
Compressed air	6 bar																																															
Air compressor capacity	30m <sup>3</sup> /h																																															
Air tank capacity	155 L																																															

## PERIPHERALS



Stacker



In-line inspection station



Colt  
(Automatic packer with bundling & strapping machine)

BOXES	1450												1650				1850				2000				2400				2800				3200			
<b>Straight line</b>	A: 290 - 1450 mm B: 200 - 1200 mm E: 170 - 715 mm				A: 290 - 1650 mm B: 200 - 1200 mm E: 170 - 815 mm				A: 290 - 1850 mm B: 200 - 1200 mm E: 170 - 915 mm				A: 290 - 2000 mm B: 200 - 1500 mm E: 170 - 1015 mm				A: 290 - 2400 mm B: 200 - 1500 mm E: 170 - 1115 mm				A: 290 - 2800 mm B: 200 - 1500 mm E: 170 - 1300 mm				A: 290 - 3200 mm B: 200 - 1500 mm E: 170 - 1500 mm											
<b>Lock-bottom</b>	A: 290 - 1450 mm B: 300 - 1200 mm E: 170 - 665 mm				A: 290 - 1650 mm B: 300 - 1200 mm E: 170 - 770 mm				A: 290 - 1850 mm B: 300 - 1200 mm E: 170 - 900 mm				A: 290 - 2000 mm B: 300 - 1500 mm E: 170 - 1050 mm				A: 290 - 2400 mm B: 300 - 1500 mm E: 170 - 1100 mm				A: 290 - 2800 mm B: 300 - 1500 mm E: 170 - 1400 mm				A: 290 - 3200 mm B: 300 - 1500 mm E: 170 - 1500 mm											
<b>Double-wall</b>	A: 290 - 1450 mm B: 200 - 1200 mm D: 50 - 200 mm E: 170 - 1250 mm				A: 290 - 1650 mm B: 200 - 1200 mm D: 50 - 200 mm E: 170 - 1450 mm				A: 290 - 1850 mm B: 200 - 1200 mm D: 50 - 200 mm E: 170 - 1650 mm				A: 290 - 2000 mm B: 200 - 1500 mm D: 50 - 200 mm E: 170 - 1750 mm				A: 290 - 2400 mm B: 200 - 1500 mm D: 50 - 200 mm E: 170 - 2150 mm				A: 290 - 2800 mm B: 200 - 1500 mm D: 50 - 200 mm E: 170 - 2550 mm				A: 290 - 3200 mm B: 200 - 1500 mm D: 50 - 200 mm E: 170 - 2850 mm											
<b>4 - corner</b>	A: 290 - 1450 mm B: 220 - 1200 mm H: 35 - 180 mm				A: 290 - 1650 mm B: 220 - 1200 mm H: 35 - 180 mm				A: 290 - 1850 mm B: 220 - 1200 mm H: 35 - 180 mm				A: 290 - 2000 mm B: 220 - 1500 mm H: 35 - 180 mm				A: 290 - 2400 mm B: 220 - 1500 mm H: 35 - 180 mm				A: 290 - 2800 mm B: 220 - 1500 mm H: 35 - 180 mm				A: 290 - 3200 mm B: 220 - 1500 mm H: 35 - 180 mm											
<b>4 - corner with Lid</b>	A: 290 - 1450 mm B: 220 - 1200 mm H: 35 - 150 mm				A: 290 - 1550 mm B: 220 - 1200 mm H: 35 - 150 mm				A: 290 - 1750 mm B: 220 - 1200 mm H: 35 - 150 mm				A: 290 - 2000 mm B: 220 - 1500 mm H: 35 - 150 mm				A: 290 - 2400 mm B: 220 - 1500 mm H: 35 - 150 mm				A: 290 - 2800 mm B: 220 - 1500 mm H: 35 - 180 mm				A: 290 - 3200 mm B: 220 - 1500 mm H: 35 - 180 mm											
<b>6 - corner</b>	A: 550 - 1300 mm B: 220 - 1200 mm H: 35 - 180 mm				A: 550 - 1500 mm B: 220 - 1200 mm H: 35 - 180 mm				A: 550 - 1700 mm B: 220 - 1200 mm H: 35 - 180 mm				A: 550 - 1850 mm B: 220 - 1500 mm H: 35 - 180 mm				A: 550 - 2250 mm B: 220 - 1500 mm H: 35 - 180 mm				A: 550 - 2650 mm B: 220 - 1500 mm H: 35 - 180 mm				A: 550 - 3050 mm B: 220 - 1500 mm H: 35 - 180 mm											



[info@dgm-global.com](mailto:info@dgm-global.com)  
[www.dgm-global.com](http://www.dgm-global.com)

TEL (86) 0752-277 37 80  
FAX (86) 0752-277 37 78

HuiHuan Industrial Area, Huizhou City,  
Guangdong Province, China

DGM Technology (China) Co., Ltd