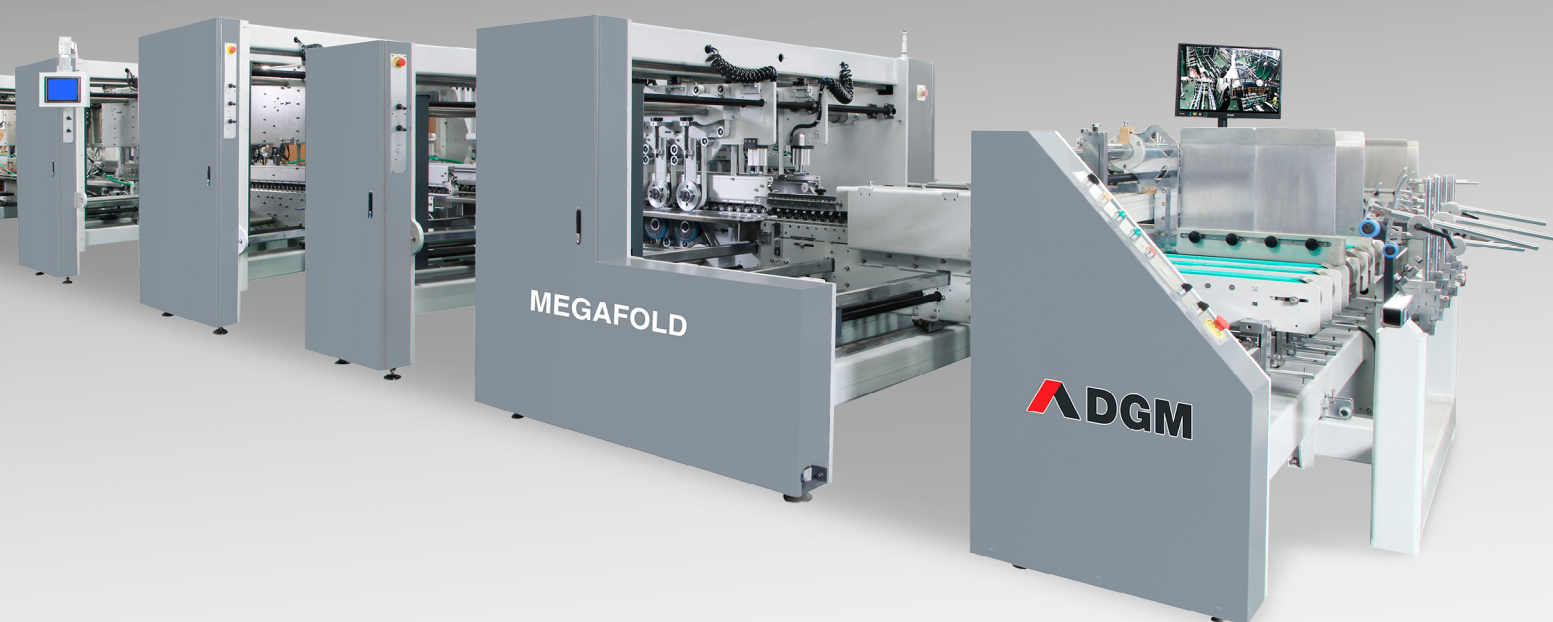


FOLDER-GLUERS

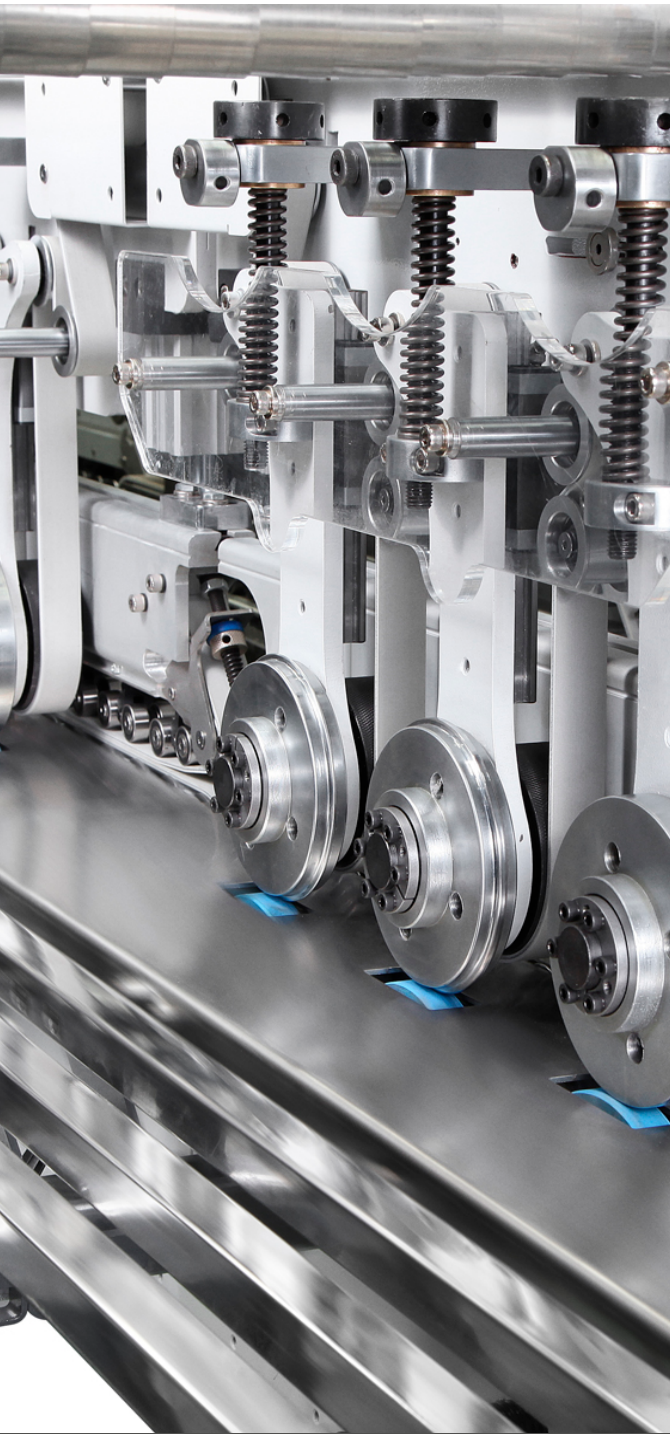
# MEGAFOLD

1450 / 1650 / 1850 / 2000 / 2400 / 2800 / 3200



HIGH RESPONSIVE  
CARTON CONVERTING  
MACHINERY

 **DGM**



# MEGAFOLD

1450 / 1650 / 1850 / 2000 / 2400 / 2800 / 3200

## A high capacity production solution

### HIGH SPEED AUTOMATIC FOLDER GLUER

MEGAFOLD is a perfect solution to work with medium and large sized boxes in the heavy packaging industry. With high productivity, it offers the flexibility to run thin solid board to thick corrugated carton.

- Modular design allows different configurations, to meet customer's needs.
- Wide range of accessories that allows to run thousands of designs.
- Fast, steady and precise machine, easy to set up and operate.
- All sections with independent servo-motor driving system.
- Motorized carrier movement with high precision linear guides.
- Memory function to save repetitive jobs.

## MODELS

### MEGAFOLD C

Without pre-folding section, suitable for straight-line boxes.

### MEGAFOLD AC

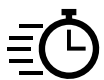
Without pre-folding section, suitable for straight-line, crash-lock bottom & double wall boxes.

### MEGAFOLD PC

Including pre-folding section, suitable for straight-line, crash-lock bottom & double wall boxes.

### MEGAFOLD SL

Including pre-folding section, suitable for straight-line, crash-lock bottom, double wall, 4 & 6-corner boxes.



#### FAST PROCESSING

300m / min



#### WIDE RANGE

1450 mm to  
3200 mm



#### MATERIALS

Cardboard  
Corrugated

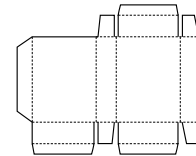


#### FLEXIBLE & EASY TO OPERATE

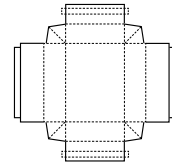


CERTIFICATED

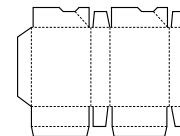
## BOXES



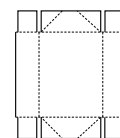
Straight line



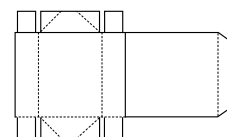
Double - wall



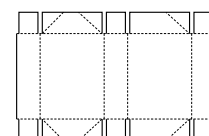
Lock - bottom



4 - corner



4 - corner  
with Lid



6 - corner

# MEGAFOLD

1450 / 1650 / 1850 / 2000 / 2400 / 2800 / 3200



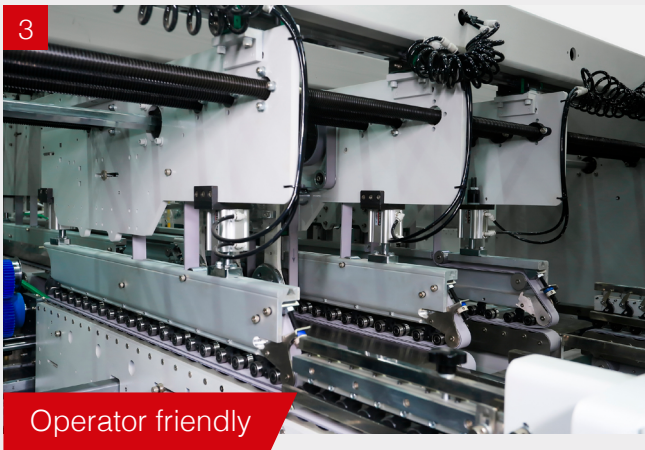
Deliver solution and productivity

Upper and lower drive mechanism for length adjustment.



Infinitely close to perfection

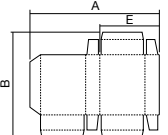
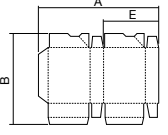
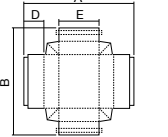
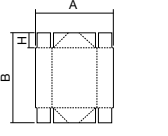
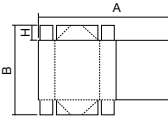
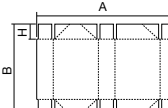
Squaring device for crash-lock bottom boxes, it reduces fish-tail.



Upper carriers with pneumatic auto-lifting system. Facilitates box clearance if jam occurs.



Pneumatic lifting front hook for big crash-lock bottom boxes.

<b>SPECIFICATIONS</b>															
<b>MEGAFOLD</b>	<b>1450</b>				<b>1650</b>				<b>1850</b>						
<b>Processed materials</b>															
Carton board max.	1200 g/m <sup>2</sup>				1200 g/m <sup>2</sup>				1200 g/m <sup>2</sup>						
Corrugated flute type	N, E, F, C, B, AB 3 & 5 layers				N, E, F, C, B, AB 3 & 5 layers				N, E, F, C, B, AB 3 & 5 layers						
<b>Capability</b>															
Speed max.	300 m/min				300 m/min				300 m/min						
Inching speed	20 m/min				20 m/min				20 m/min						
Thickness of folded box max.	20 mm				20 mm				20 mm						
Blank width	290 - 1450 mm				290 - 1650 mm				290 - 1850 mm						
<b>Dimensions &amp; weight</b>															
	<b>C</b>	<b>AC</b>	<b>PC</b>	<b>SL</b>	<b>C</b>	<b>AC</b>	<b>PC</b>	<b>SL</b>	<b>C</b>	<b>AC</b>	<b>PC</b>	<b>SL</b>			
Length	18.8 m	20.8 m	23.8 m	23.8 m	18.8 m	20.8 m	23.8 m	23.8 m	18.8 m	20.8 m	23.8 m	23.8 m			
Width	2.2 m	2.2 m	2.2 m	2.2 m	2.4 m	2.4 m	2.4 m	2.4 m	2.6 m	2.6 m	2.6 m	2.6 m			
Height	1.7 m	1.7 m	1.7 m	1.7 m	2.0 m	2.0 m	2.0 m	2.0 m	2.0 m	2.0 m	2.0 m	2.0 m			
Net Weight	12 Ton	13.5 Ton	14.5 Ton	14.8 Ton	13 Ton	14.5 Ton	15.5 Ton	15.8 Ton	15 Ton	17 Ton	18 Ton	18.2 Ton			
<b>Installation</b>															
Electrical connected load	40 kW	45 kW	50 kW	56 kW	40 kW	45 kW	50 kW	56 kW	40 kW	45 kW	50 kW	56 kW			
Compressed air	6 bar	6 bar	6 bar	6 bar	6 bar	6 bar	6 bar	6 bar	6 bar	6 bar	6 bar	6 bar			
Air compressor capacity	30m <sup>3</sup> /h	30m <sup>3</sup> /h	30m <sup>3</sup> /h	30m <sup>3</sup> /h	30m <sup>3</sup> /h	30m <sup>3</sup> /h	30m <sup>3</sup> /h	30m <sup>3</sup> /h	30m <sup>3</sup> /h	30m <sup>3</sup> /h	30m <sup>3</sup> /h	30m <sup>3</sup> /h			
Air tank capacity	155 L	155 L	155 L	155 L	155 L	155 L	155 L	155 L	155 L	155 L	155 L	155 L			
<b>BOXES</b>															
 <span style="margin-left: 20px;"><b>Straight line</b></span>															
<table border="0" style="width: 100%;"> <tr> <td style="width: 33%; vertical-align: top;">           A: 290 - 1450 mm            B: 200 - 1200 mm            E: 170 - 715 mm         </td> <td style="width: 33%; vertical-align: top;">           A: 290 - 1650 mm            B: 200 - 1200 mm            E: 170 - 815 mm         </td> <td style="width: 33%; vertical-align: top;">           A: 290 - 1850 mm            B: 200 - 1200 mm            E: 170 - 915 mm         </td> </tr> </table>													A: 290 - 1450 mm B: 200 - 1200 mm E: 170 - 715 mm	A: 290 - 1650 mm B: 200 - 1200 mm E: 170 - 815 mm	A: 290 - 1850 mm B: 200 - 1200 mm E: 170 - 915 mm
A: 290 - 1450 mm B: 200 - 1200 mm E: 170 - 715 mm	A: 290 - 1650 mm B: 200 - 1200 mm E: 170 - 815 mm	A: 290 - 1850 mm B: 200 - 1200 mm E: 170 - 915 mm													
 <span style="margin-left: 20px;"><b>Lock - bottom</b></span>															
<table border="0" style="width: 100%;"> <tr> <td style="width: 33%; vertical-align: top;">           A: 290 - 1450 mm            B: 300 - 1200 mm            E: 170 - 665 mm         </td> <td style="width: 33%; vertical-align: top;">           A: 290 - 1650 mm            B: 300 - 1200 mm            E: 170 - 770 mm         </td> <td style="width: 33%; vertical-align: top;">           A: 290 - 1850 mm            B: 300 - 1200 mm            E: 170 - 900 mm         </td> </tr> </table>													A: 290 - 1450 mm B: 300 - 1200 mm E: 170 - 665 mm	A: 290 - 1650 mm B: 300 - 1200 mm E: 170 - 770 mm	A: 290 - 1850 mm B: 300 - 1200 mm E: 170 - 900 mm
A: 290 - 1450 mm B: 300 - 1200 mm E: 170 - 665 mm	A: 290 - 1650 mm B: 300 - 1200 mm E: 170 - 770 mm	A: 290 - 1850 mm B: 300 - 1200 mm E: 170 - 900 mm													
 <span style="margin-left: 20px;"><b>Double - wall</b></span>															
<table border="0" style="width: 100%;"> <tr> <td style="width: 33%; vertical-align: top;">           A: 290 - 1450 mm            B: 200 - 1200 mm            D: 50 - 200 mm            E: 170 - 1250 mm         </td> <td style="width: 33%; vertical-align: top;">           A: 290 - 1650 mm            B: 200 - 1200 mm            D: 50 - 200 mm            E: 170 - 1450 mm         </td> <td style="width: 33%; vertical-align: top;">           A: 290 - 1850 mm            B: 200 - 1200 mm            D: 50 - 200 mm            E: 170 - 1650 mm         </td> </tr> </table>													A: 290 - 1450 mm B: 200 - 1200 mm D: 50 - 200 mm E: 170 - 1250 mm	A: 290 - 1650 mm B: 200 - 1200 mm D: 50 - 200 mm E: 170 - 1450 mm	A: 290 - 1850 mm B: 200 - 1200 mm D: 50 - 200 mm E: 170 - 1650 mm
A: 290 - 1450 mm B: 200 - 1200 mm D: 50 - 200 mm E: 170 - 1250 mm	A: 290 - 1650 mm B: 200 - 1200 mm D: 50 - 200 mm E: 170 - 1450 mm	A: 290 - 1850 mm B: 200 - 1200 mm D: 50 - 200 mm E: 170 - 1650 mm													
 <span style="margin-left: 20px;"><b>4 - corner</b></span>															
<table border="0" style="width: 100%;"> <tr> <td style="width: 33%; vertical-align: top;">           A: 290 - 1450 mm            B: 220 - 1200 mm            H: 35 - 180 mm         </td> <td style="width: 33%; vertical-align: top;">           A: 290 - 1650 mm            B: 220 - 1200 mm            H: 35 - 180 mm         </td> <td style="width: 33%; vertical-align: top;">           A: 290 - 1850 mm            B: 220 - 1200 mm            H: 35 - 180 mm         </td> </tr> </table>													A: 290 - 1450 mm B: 220 - 1200 mm H: 35 - 180 mm	A: 290 - 1650 mm B: 220 - 1200 mm H: 35 - 180 mm	A: 290 - 1850 mm B: 220 - 1200 mm H: 35 - 180 mm
A: 290 - 1450 mm B: 220 - 1200 mm H: 35 - 180 mm	A: 290 - 1650 mm B: 220 - 1200 mm H: 35 - 180 mm	A: 290 - 1850 mm B: 220 - 1200 mm H: 35 - 180 mm													
 <span style="margin-left: 20px;"><b>4 - corner with Lid</b></span>															
<table border="0" style="width: 100%;"> <tr> <td style="width: 33%; vertical-align: top;">           A: 290 - 1300 mm            B: 220 - 1200 mm            H: 35 - 150 mm         </td> <td style="width: 33%; vertical-align: top;">           A: 290 - 1550 mm            B: 220 - 1200 mm            H: 35 - 150 mm         </td> <td style="width: 33%; vertical-align: top;">           A: 290 - 1750 mm            B: 220 - 1200 mm            H: 35 - 150 mm         </td> </tr> </table>													A: 290 - 1300 mm B: 220 - 1200 mm H: 35 - 150 mm	A: 290 - 1550 mm B: 220 - 1200 mm H: 35 - 150 mm	A: 290 - 1750 mm B: 220 - 1200 mm H: 35 - 150 mm
A: 290 - 1300 mm B: 220 - 1200 mm H: 35 - 150 mm	A: 290 - 1550 mm B: 220 - 1200 mm H: 35 - 150 mm	A: 290 - 1750 mm B: 220 - 1200 mm H: 35 - 150 mm													
 <span style="margin-left: 20px;"><b>6 - corner</b></span>															
<table border="0" style="width: 100%;"> <tr> <td style="width: 33%; vertical-align: top;">           A: 550 - 1300 mm            B: 220 - 1200 mm            H: 35 - 150 mm         </td> <td style="width: 33%; vertical-align: top;">           A: 550 - 1500 mm            B: 220 - 1200 mm            H: 35 - 180 mm         </td> <td style="width: 33%; vertical-align: top;">           A: 550 - 1700 mm            B: 220 - 1200 mm            H: 35 - 180 mm         </td> </tr> </table>													A: 550 - 1300 mm B: 220 - 1200 mm H: 35 - 150 mm	A: 550 - 1500 mm B: 220 - 1200 mm H: 35 - 180 mm	A: 550 - 1700 mm B: 220 - 1200 mm H: 35 - 180 mm
A: 550 - 1300 mm B: 220 - 1200 mm H: 35 - 150 mm	A: 550 - 1500 mm B: 220 - 1200 mm H: 35 - 180 mm	A: 550 - 1700 mm B: 220 - 1200 mm H: 35 - 180 mm													

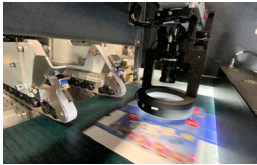
## PERIPHERALS

# MEGAFOLD

1450 / 1650 / 1850 / 2000  
2400 / 2800 / 3200



Stacker



In-line  
inspection  
station



Colt - Fully auto-  
matic packer with  
bundling & strapping  
machine



[info@dgm-global.com](mailto:info@dgm-global.com)  
[www.dgm-global.com](http://www.dgm-global.com)

TEL (86) 0752-277 37 80  
FAX (86) 0752-277 37 78

HuiHuan Industrial Area, Huizhou City,  
Guangdong Province, China

DGM Technology (China) Co., Ltd